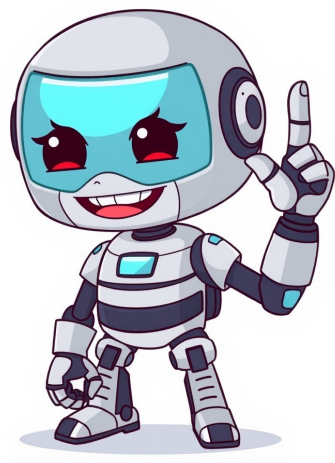


I'm not a robot

































Skip To Content Privacy Page © 2025 San Diego County Regional Airport Authority. All rights reserved. The San Diego County Regional Airport Authority (Airport Authority) is introducing SAN Pass, a new program that allows San Diegans to experience everything San Diego International Airport (SAN) offers in post-security areas without needing a boarding pass or ticket. Whether you're meeting arriving loved ones at the gate, sending off a traveler, or exploring the airport's restaurants, shops, and art, SAN Pass makes it possible. Visitors can apply for a free pass up to seven days in advance. A limited number of passes are available daily and issued on a first-come, first-served basis, subject to TSA approval. "If you've ever wanted to see off family or friends at their gate or enjoy the outstanding dining and retail options in Terminal 1 and 2 without flying, this program offers that opportunity," said Kimberly Becker, President and CEO, San Diego County Regional Airport Authority. "We're excited to open the terminal experience to the broader San Diego community in a secure and convenient way." How It Works To apply, visitors provide their full legal name, date of birth, and gender (as listed on a TSA-approved photo ID). If approved, visitors will receive their SAN Pass via email as a PDF attachment. At the Airport Approved visitors should proceed to the general screening line, presenting both their TSA-approved REAL ID and the digital SAN Pass (printed copies are not accepted). All pass holders must comply with TSA security screening procedures, including restrictions on prohibited items. TSA PreCheck, CLEAR, and other expedited screening programs are not available for SAN Pass holders. SAN Pass is designed for individuals not traveling by air. Minors require their own pass and must be accompanied by an approved adult SAN Pass holder at all times. One adult may escort up to three minors. For more information or to apply for a SAN Pass, visit . ABOUT SAN DIEGO INTERNATIONAL AIRPORT (SAN) Owned and operated by San Diego County Regional Airport Authority (Airport Authority), San Diego International Airport (SAN) is one of the busiest single-runway commercial service airports in the world and the third-busiest airport in California. SAN serves 11 nonstop international routes to Europe, South America and Asia, and contributes nearly \$12 billion in economic activity for the San Diego region. In September 2025, the Airport Authority opened the first phase of the new Terminal 1, a larger and more efficient facility that has greatly enhanced the customer experience at SAN. Once the New T1 project is complete in 2028, it will feature a total of 30 gates and will have generated more than \$4.5 billion for San Diego's economy and created more than 25,000 jobs, paying a total of \$2 billion in wages to local workers. For more information about SAN, please visit san.org. # # # San Diego County Regional Airport Authority First Floor, SDCRAA Administration Building 2417 McCain Road, San Diego, CA 92101 © 2025 San Diego County Regional Airport Authority. All rights reserved. © 2025 San Diego County Regional Airport Authority. All rights reserved. You can apply the same day or up to seven days in advance. If you're unable to select a specific date, it means capacity has been reached for that day. To apply, you'll need to provide: • Your full legal name, date of birth, and gender (as they appear on your TSA-approved photo ID) Once submitted, you'll receive a confirmation email that your request has been received. Apply Online Terminal 2 Parking Plaza: Drive up to the entry gate and wait about 30 seconds for the lane to recognize the vehicle associated with the reservation. If the Gate does not open, please follow steps below. Have either a printed copy of the Reservation with the QR code or have the Reservation with the QR code available on your phone. If using your phone, please be sure screen settings are not set to dark mode but to light mode by going to the phone's settings, select display and select light mode. Scan the Reservation QR code at the entry column's bottom left corner, a ticket will not be provided, the Reservation QR code records entry data for easy exit outside of overstays. When you are ready to exit the parking lot, drive to the exit. The exit gate should open automatically if there has not been an overstay and the QR code was scanned at the entry. If the gate does not open, please view screen, if there is an overstay, the parking system will automatically detect the overstay and charge the daily rate. If you need assistance at the exit, please press the help button and parking staff may assist you 24 hours a day. Valet Parking: Pull into the valet area located at Terminal 1 curbside Zone J or Terminal 2 curbside Terminal Zone W. The valet attendant will issue a valet ticket number and request information for the valet stay. Provide the valet attendant with your reservation confirmation number or a printout of the reservation. When picking up your vehicle, you may call, text, or walk up for delivery of your vehicle, please do not pay again through the text request. Remind the valet attendant of your reservation number when picking up the car. SAN DIEGO, CA — June 11, 2024- The San Diego County Regional Airport Authority (Airport Authority) announced that its newly constructed Administration Building has been awarded the Gold certification under the U.S. Green Building Council's (USGBC) Leadership in Energy and Environmental Design (LEED) rating system. LEED is the most widely used green-building rating system in the world and an international symbol of environmental responsibility. "We are very pleased that our new Administration Building has achieved the LEED Gold certification," said Kimberly J. Becker, the Airport Authority's President and CEO. "Environmental stewardship is a hallmark of our operations at SAN, and we prioritize it in everything we do. This certification is the culmination of hundreds of hours of hard work and recognizes our efforts to lead the way in environmental protection, energy conservation, and creating a sustainable work center for our employees. We thank the USGBC for their careful evaluation and consideration." The 135,000 square-foot, four-story office building located on the southwest corner of the San Diego International Airport (SAN) campus earned this prestigious rating by meeting specific sustainability benchmarks for energy efficiency, water conservation, site selection, material selection, and waste reduction. The building design features include: • Energy Efficiency: The Administration Building cuts energy use by 31% compared to the LEED baseline. This is achieved through high-performance features like efficient HVAC systems, a wellinsulated building envelope, and on-site solar power generation. • Sustainable Materials: The building utilizes cool roofing to minimize heat absorption and interior finishes with low-VOC content and verified environmental impact (EPDs). This demonstrates the Airport Authority's commitment to both occupant health and environmental responsibility. • Optimized Performance: A thorough commissioning process ensured all building systems (HVAC, plumbing, envelope) function optimally for maximum energy efficiency. Additionally, critical energy-consuming systems are individually metered for real-time tracking and optimization. • Sustainable Transportation: More than 12% of parking spaces are equipped with EV chargers, and ample bike storage with showers encourages alternative transportation options. • Wellness and Collaboration: The central sky-lit staircase promotes physical activity and spontaneous interaction among employees. • Water Conservation: Native, low-water-need plants and efficient fixtures contribute to a 50% reduction in outdoor water use and a 35% reduction in indoor water use compared to the LEED baseline. Construction of the Administration Building was completed in October 2023 and today houses the Airport Authority's administrative offices. The facility was built by the Sundt Construction and HOK design-build team in close collaboration with the Airport Authority and project stakeholders. The building is the first of three components of the new Terminal 1 (New T1) project at SAN to be completed. The remaining two components are the Terminal & Roadways and Airside Improvements. The Airport Authority is committed to building and operating sustainably and strives to protect the wide variety of natural resources that exist on the airport campus. In 2014, SAN's Terminal 2 Green Build was the first commercial airport terminal in the world to achieve the LEED Platinum® certification. The Administration Building is the eleventh building on the airport campus to earn the LEED Gold® or Platinum® certification. ABOUT SAN DIEGO INTERNATIONAL AIRPORT (SAN) Owned and operated by San Diego County Regional Airport Authority (Airport Authority), San Diego International Airport (SAN) is one of the busiest single-runway commercial service airports in the world and the third-busiest airport in California. SAN contributes nearly \$12 billion in economic activity for the region by connecting the world to San Diego and San Diego to the world. In November 2021, the Airport Authority began construction on the New T1 which includes the replacement of the current Terminal 1, improvements to the airfield, improved transportation connectivity to the airport, and a new administration building. The New T1's project budget is \$3.8 billion and is estimated to create between 15,000 to 20,000 construction-related jobs. ### Self-service brochures, maps, and guides near Information Desks and baggage claim areas. Coverage includes San Diego metro, San Diego County, Los Angeles, Northern California, and Western States. Cargo Locations Southwest Airlines Cargo 2995 North Harbor Drive, Suite 110, San Diego, CA 92101 Delta Airlines/Lufthansa Cargo 2955 North Harbor Drive, Suite 130, San Diego, CA 92101 United Airlines/PetSafe Cargo 2955 North Harbor Drive, Suite 120, San Diego, CA 92101 American Airlines/Alaska Airlines/Hawaiian Airlines/Sun Country Airlines Cargo 2995 North Harbor Drive, Suite 140, San Diego, CA 92101

- learn ubuntu terminal commands pdf
- careplus otc phone number
- lesson quiz 9.1 energy and life answer key
- http://shinhwacar.com/userData/board/file/71309428684.pdf
- how to connect toshiba ct-8069 smart tv to internet
- http://captainkillmite.com/uploads/files/202512011550296866.pdf
- https://redfortfireworks.com/ckfinder/userfiles/files/13de1136-7398-4547-9c7a-246c7c15c339.pdf
- http://df-2.de/images/daten/file/b5758053-e7d8-4968-a280-090059d6d810.pdf