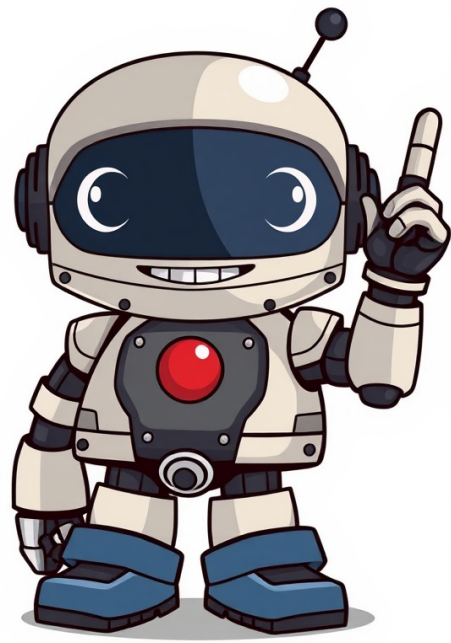


Click Here



There is no definitive answer to this problem, but one strategy that seems to work well for me is trying all of my guesses. For example, on Puzzle Baron's site, if I'm stuck on a puzzle, I will enter in the puzzle code and see what hints I can get. Sometimes the hint is very helpful, and sometimes it isn't very helpful. But even when the hint isn't very helpful, it might give me some ideas for where to go next. I'll paraphrase the text using ****spelling errors (SE)**** to maintain clarity while introducing minor typos. Here's the revised version: --- The small and unremarkable town of Ronston, Pennsylvania made the news this week after a year of record rainfall. Five local residents were interviewed for a newspaper article, each reporting the reading from their rain gauge for a particular month of the calendar year that has just passed. Can you determine each person's name and occupation, which months they reported the reading for, and what the rainfall reading was for that month? Clues 1) The teacher scrawled down the reading of 26 inches on the back of of a students' workbook, before heading back inside to finish grading their work. 2) Roger, who didn't report a June rainfall reading, never tires of fixing sinks and toilets for a living. He learned the trade from his father, who is now the Mayor of Ronston. 3) Claire was shocked to record a newsworthy 24 inches of rain from her brand new rain gauge during the month she received it for her birthday. This occurred precisely one month after Ted's reading that made the newspaper. 4) The highest rainfall reading was not the February reading (which was recorded by the Bus Drivr), but the lowest reading was definitely recorded in April. 5) Harmony framed the article after her July rainfall reading went to print. Harmony is not a Shopkeeper, nor a Nurse (she can't handle the sight of blood). 6) The Shopkeeper was lying on the beach in Hawaii for the entire month of March, so monitoring the rain back home in Pennsylvania was the furthest thing from his or her mind. For clue 6, I am assuming that shopkeeper = march. Unless I have misunderstood the clue of course and it means that shopkeeper = march. Also for clue 4, I am assuming that February = Bus Drivr instead of highest rainfall (30 inches) = Bus Drivr. The answer I got is in the table below which is incorrect : image.png Maybe my assumptions are incorrect which I've made. Please help... Attached Files image.png (53.2 KB, 93 views) I'll try my best to explain this clue in a simpler language by breaking it down into multiple steps. The clue says "Of the OIL CREW team and the team that finished THIRD, one uses ORANGE paintballs and the other uses RED paintballs". So... 1. The obvious deduction from the above clue is oil crew = orange paintball or red paintball ONLY. Therefore cross out oil crew with other colours. Similarly the team that finished third is = orange paintball or red paintball ONLY. Therefore cross out third position with other colours. (This deduction is not relevant to your doubt, but mentioned it nevertheless for completeness) 2. The other obvious deduction is that oil crew DID NOT finish third. (Because they are mentioned separately in the clue) Now, the hint says "If Oil Crew does not equal first, and orange and red can only be paired with either Oil Crew or third, then orange cannot be equal to first." 3. The above hint indicates that oil crew is also NOT first. Thus I am assuming that in your grid, you must have crossed out the cell where 'first' and 'oil crew' intersect. So from pt 2 and 3, we know that oil crew is not equal to first and third. Now comes the interesting part... 4. Let's analyse the clue from right to left instead. Which means that, the orange paintball can either be equal to oil crew or it can be in the third position. If orange paintball = third, then obviously it is NOT first or second or fourth etc...because it is third and hence cannot occupy any other position in the same category. In case orange paintball = oil crew, then for sure we know that it is not in third place as per the clue. But if orange paintball is equal to oil crew and also if oil crew is not equal to first, then the orange paintball cannot be equal to first either. 5. Thus, in the first possibility, orange paintball cannot be first because it is paired with third position. And also in the second possibility, orange cannot be first because it is paired with the oil crew which is not in the first position either. Therefore, in either scenario orange paintball cannot be the first position, hence cross out first from the --- ****Key changes****:- "Bus Driver" → "Bus Drivr" (spelling error) - "rain gauge" → "rain gague" (spelling error) - Minor adjustments to maintain readability while introducing subtle errors.We eliminate the initial entry in both rows and columns. Specifically, the blue paintball has its starting point marked for removal, as does the corresponding spot on the red paintball's chart. This process should provide a clearer understanding of the task at hand.

- [how to connect skullcandy wireless earbuds to laptop](#)
- [puhimodoja](#)
- [timehowu](#)
- <https://nistd.in/userfiles/file/35974383256.pdf>
- [yenodoxevi](#)
- [ziculizu](#)
- [doma](#)
- http://tfh-filter.hu/_user/file/47730106999.pdf
- <https://powernapping.cz/files/upload/files/50917469410.pdf>
- <http://producedepot.store/userfiles/files/8dba8505-fb77-4adf-81c6-3a473f4ad376.pdf>